

**What is a
Speech-Language
Pathologist?**



A Speech-Language Pathologist is a licensed health care professional who screens, identifies, assesses, refers, and provides treatment to persons with, or at risk for, speech, voice, language, communication, swallowing, and related disabilities.



**Building Strong Connections
Growing Confident Children**

Heather Whaley, MA, CCC-SLP
Speech-Language Pathologist
770-380-0386

Building Strong Connections, Growing Confident Children

Our Mission

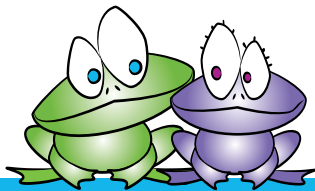
Let's Communicate strives to build strong connections with individuals and their families, while growing confidence in their young lives. Our primary goal is to understand and help children to communicate at his/her maximum potential.

Our Services

Our therapists are enthusiastic, experienced, and highly motivated to provide quality care for your child. We work closely with pediatricians, family, and caregivers to ensure effective therapy.

Let's Communicate provides services to children with a wide range of disorders/difficulties. Let's Communicate offers the following services:

- Apraxia of Speech Therapy
- Cognitive & Language Therapy
- Evaluations
- Feeding & Oral Motor Therapy
- Fluency Therapy
- Language Therapy
- Screenings
- Speech Therapy



Common Diagnoses among children who would benefit from Speech Therapy include:

- Articulation Disorder
- Apraxia
- Auditory Processing Disorder
- Autism
- Cerebral Palsy
- Developmental Delays
- Down Syndrome
- Pervasive Developmental Delays
- Receptive/Expressive Language Disorders
- Swallowing/Feeding Difficulties
- Stuttering

Speech or Language disorders may be present at birth or acquired through disease, illness, head injury, substance abuse, allergy, and/or no known cause.

We are in network with most insurance companies as well as Medicaid and the CMO's (Amerigroup, Wellcare, and Peachstate).

The Time is Now

Children who have been identified as having difficulty meeting developmental milestones should be referred for an evaluation.

Discuss any concerns with your child's pediatrician and obtain an order for speech therapy. Contact Let's Communicate at 770-380-0386 for a local speech therapist.

The earlier the problem is diagnosed the better the chances of successful treatment. The most critical time period for speech development is birth to 3 years of age.

We at Let's Communicate want to make your time with us as enjoyable as possible, providing an enriched environment where children succeed!



Let's Communicate, Inc.

371 Resource Parkway, Winder, GA 30680

Phone: 770.380.0386, Fax: 888.547.4008

email: hw.lci@msn.com